

This activity will illustrate:

- Different stages of growth
- Length of wheat's growing cycle
- Essential ingredients for growth
- Practise in procedural writing

Materials and method

1. Go to local seed or co-op store and purchase wheat kernels (wheat seeds).
2. Place a folded paper towel on a paper plate and lay 100 wheat kernels on top.
3. Sprinkle daily with water.
4. After a few days have students count the number of seeds that have sprouted
 - a. What percentage of the kernels germinated?
5. Transfer the sprouted wheat into soil.
6. Measure the growth on a weekly basis. (Use growth journal)
 - a. How tall is the wheat? (Wheat can grow up to 90 cm)
 - b. What colour is the plant at different stages?

The cycle of winter wheat

- seed is planted in the fall
- seed starts to grow and gets about 6 inches
- the frost comes and the seed goes dormant (rests) over the winter
- in spring the plant begins to grow again helped by the sun and warmer temperatures
- wheat plant turns from green to gold as it matures
- a mature plant is golden colour and ready to be harvested

Review the different parts of the wheat plant – leaves, stem, roots, head containing the kernels, and awn.

Points to discuss

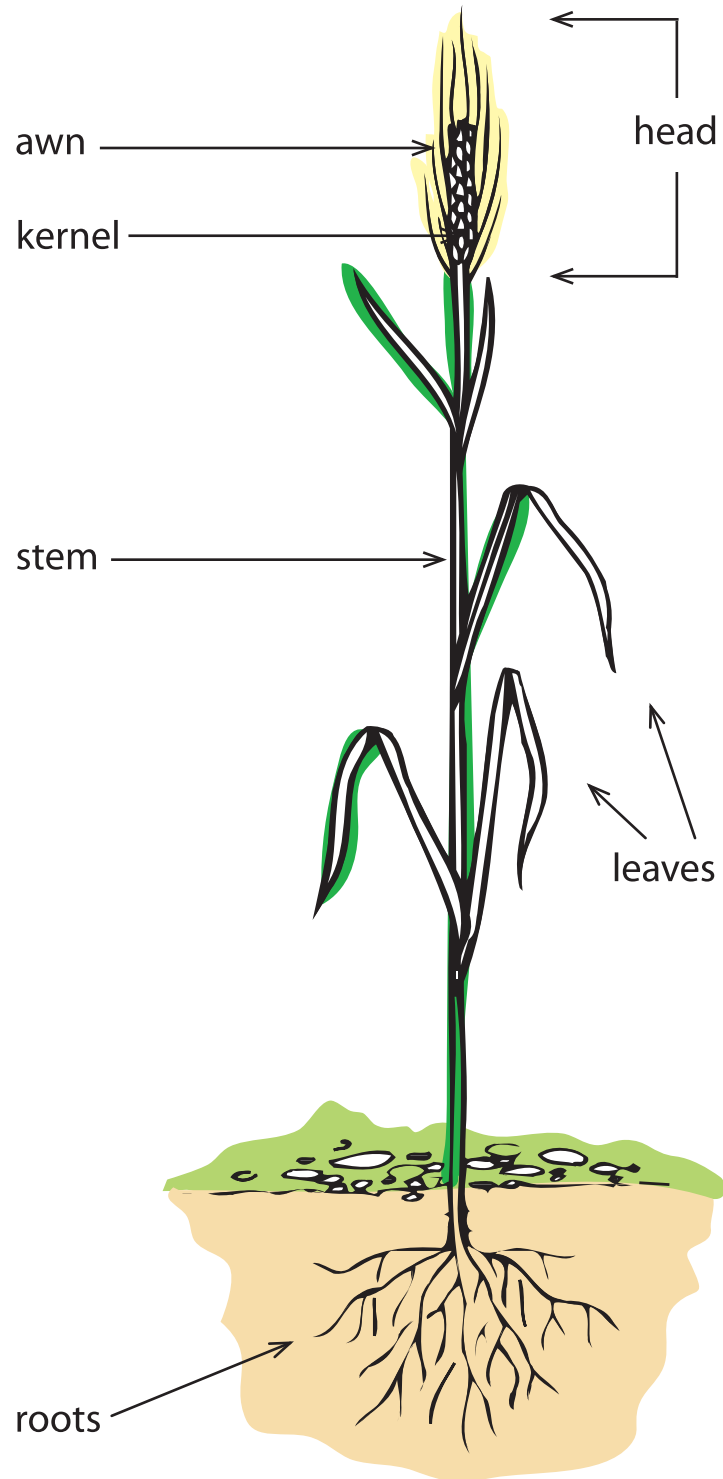
To grow, wheat needs sun, water and nutrients (soil). It takes about 100 days for wheat to fully grow. The soil needs to be prepared for the seed. A tractor breaks it up into fine particles which may take the farmer many hours. Another machine puts the seed in the ground. First it cuts furrows (grooves in the soil), then it puts the seed in the ground (sows the seed), then it covers the seed with dirt. This machine is called a seed grill.

The first seed drill was invented in 1701 by Jethro Tull. It was a horse-drawn hoe that ploughed and planted the seeds in uniform rows. Before that, seeds were scattered on the ground by hand and many did not even germinate since some were too crowded. The seed drill machine helps increase the yield.

Wheat can be planted in the spring or fall. Winter wheat is planted in the fall and harvested the following summer. Spring wheat is planted in the spring and harvested in early fall.

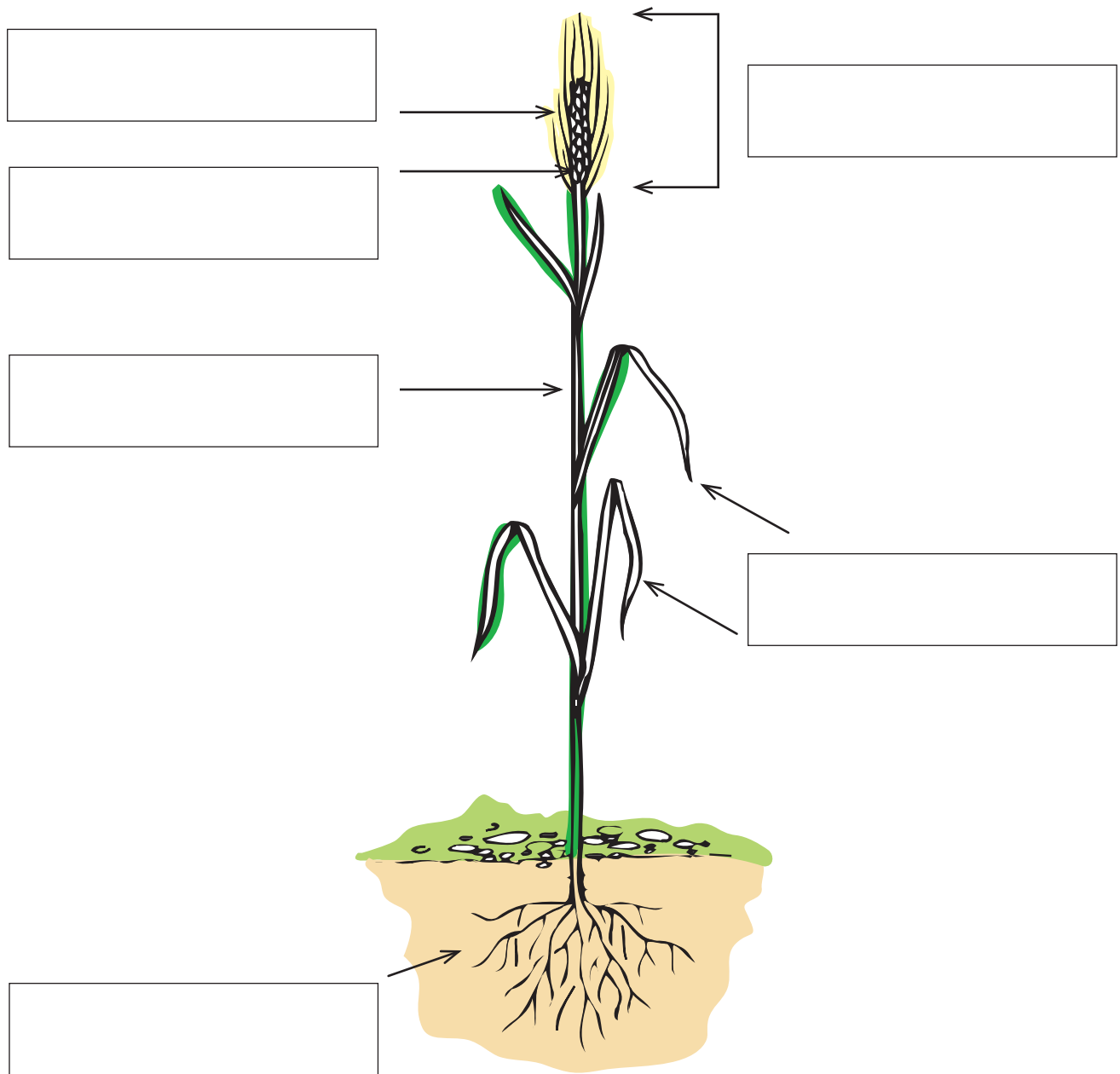
Activity

Parts of the wheat plant



Activity

Parts of the wheat plant



Cut out the words and glue them where they belong in the picture.



awn

stem

leaves

kernel

head

roots

Activity

Grain growth journal

Draw what you see and briefly describe it.

Week

Week

Week

Week

Week

Week
